



Volume 9, Number 1

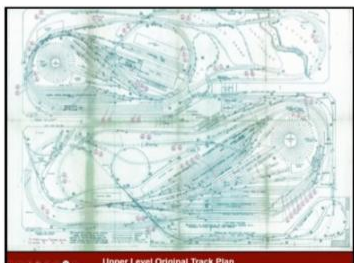
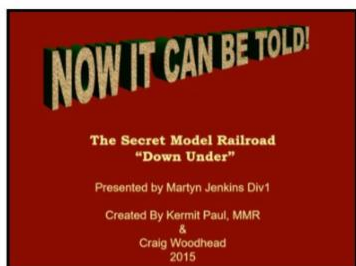
January 2025

The NMRA's *Turntable* is a monthly publication that, like a railroad turntable, will lead you in several directions on the internet.

This e-publication is a collection of railroad and model railroad videos, podcasts, websites, and/or other information freely available on the internet that we think may be of interest to you. The NMRA claims no ownership of this information, nor do we endorse its creators or their websites. The *NMRA Turntable* will not promote individuals or their for-profit ventures.

Having trouble seeing this email? [View as Webpage](#)

The Lost Layout of Mick Williams





The Lost Layout of Mick Williams

In the late 1970's, model train collector Mick Williams had a layout built on his estate near Sydney, Australia to operate his large collection of O scale trains. This is the story of the team that designed, built and maintained the

Niagara Electrics: Modeling a Canadian National Railways subsidiary under wire, in 1:64

Meet The NS&T






LDSIG Virtual Clinic

Niagara Electrics: Modelling a Canadian National Railways subsidiary under wire, in 1:64

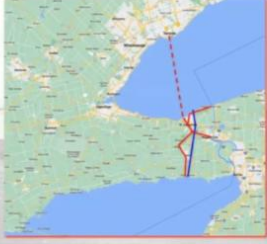
Trevor Marshall
November 17th 2024

When it ran

- Formed: 1899
- Canadian National Electric Railways: 1923
- First buses: 1929
- Last rail passenger service 1959 / Wires down: 1960
- Transferred to Trillium Railway in the 1990s
- Parts of it still operated today, by GIC Rail




Where it ran



A roadmap for niche modelling

- Determine key prototype equipment, structures, features, and details
- Determine what's available
 - Can it be found?
- Determine what's not available
 - Can it be made?
- Picking the right prototype helps

Express & freight services



Niagara Electrics

Niagara Electrics: Modelling a Canadian National Railways subsidiary under wire, in 1:64

What layout design decisions are involved when one chooses to model an obscure prototype in a nice scale? Those were questions Trevor faced when he decided to pursue his dream layout - based on the Niagara St. Catharines & Toronto Railway, an electric interurban that once ran through the city where he lived in his impressionable teenage years.

Trevor will share the story of the NS&T, his relationship to it, and how his 40-year interest turned into an opportunity to model it in S scale.

To make this relevant to a broader audience, he'll frame his presentation in terms of the decisions he made before determining whether he could, realistically, pursue this project. These include the availability of suitable information, equipment, and other essentials, new skills that might have to be learned, and painful decisions about what can fit in the layout space and what must be tossed over the side.

Trevor will also share an unexpected development which resulted in a decision to build two smaller layouts in his current space, instead of one devoted exclusively to the NS&T.

SER President Roy Masterson's Southern Railway - Cherokee Division

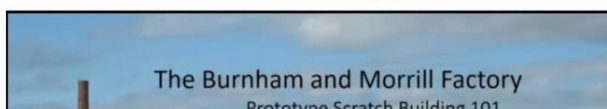


Southern Railway—Cherokee Division

Step into the world of HO scale model railroading with a captivating tour of NMRA Southeastern Region President Roy Masterson's Southern Railway Cherokee Division. This video showcases the impressive craftsmanship and attention to detail that Roy has poured into this incredible layout. Set in the golden era of the Southern Railway, the Cherokee Division features stunning landscapes, prototypical train operations, and meticulously designed structures. From lush rolling hills to busy yard scenes, you'll be inspired by the realism and passion behind every inch of this model railway.

Whether you're a seasoned model railroader or just getting into the hobby, this video offers valuable insights and breathtaking visuals. Watch as trains glide through intricate tracks, cross steel trestles, and bring to life the rich history of Southern railroading.

Burnham & Morrill Factory Prototype Scratch Building 101





The Burnham and Morrill Company

- Founded- 1867, by George Burnham and Charles S Morrill
- Canned meats, vegetables, fish, then great success with corn
- Factory- 1913
- 1920's- Brick oven baked beans
- 1930's- operation 24 hours a day
- Northeastern University technology graduate school



Burnham & Morrill Factory

Tom Oxnard, MMR® shows us how he built this selectively compressed version of the Burnham & Morrill (B&M) Factory in Portland, Maine. The structure has an extensive interior and has interior lighting.

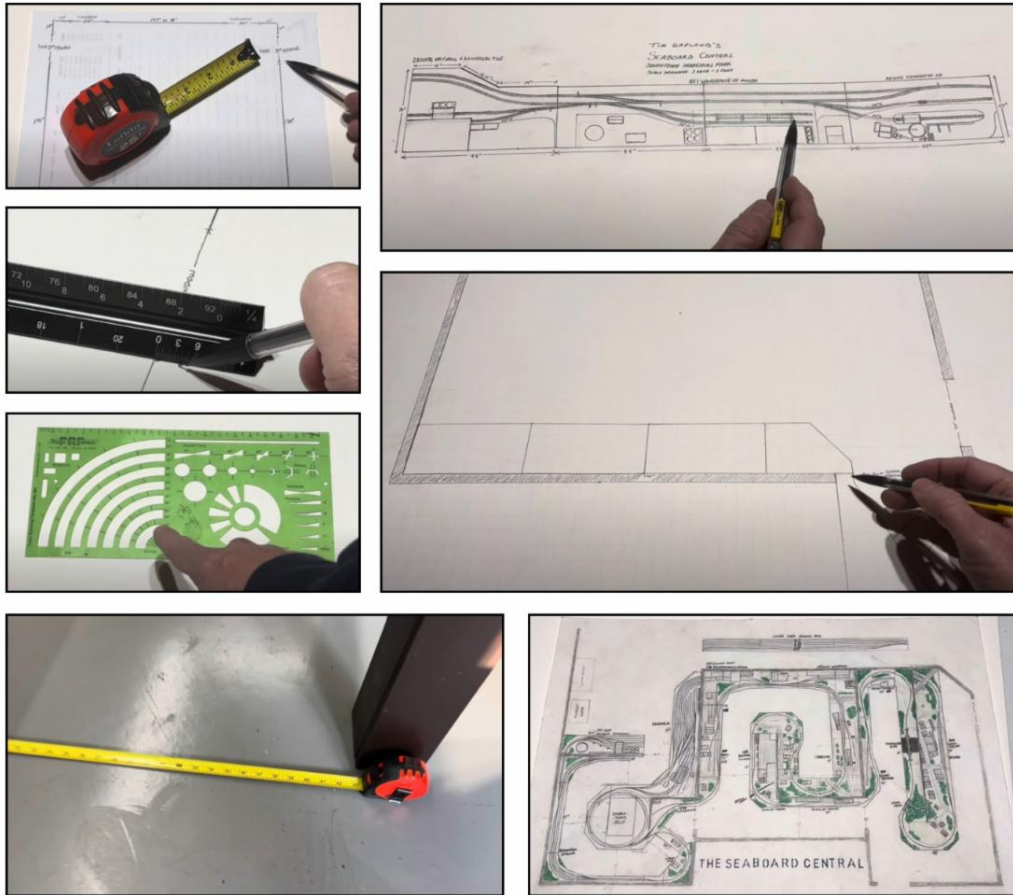
Review: Atlas Master Metra Nippon-Sharyo Gallery Commuter Car Sets 1&2 HO Scale Type 8500/6000



Nippon-Sharyo Gallery Commuter Car

Today we'll unbox and review the brand new Atlas Master Metra cars in HO Scale. These are the Nippon-Sharyo versions and are the newest cars in the Metra fleet. Rapido will soon have the older Budd cars, so stay tuned for that review!

How to Draw a Track Plan Part 1



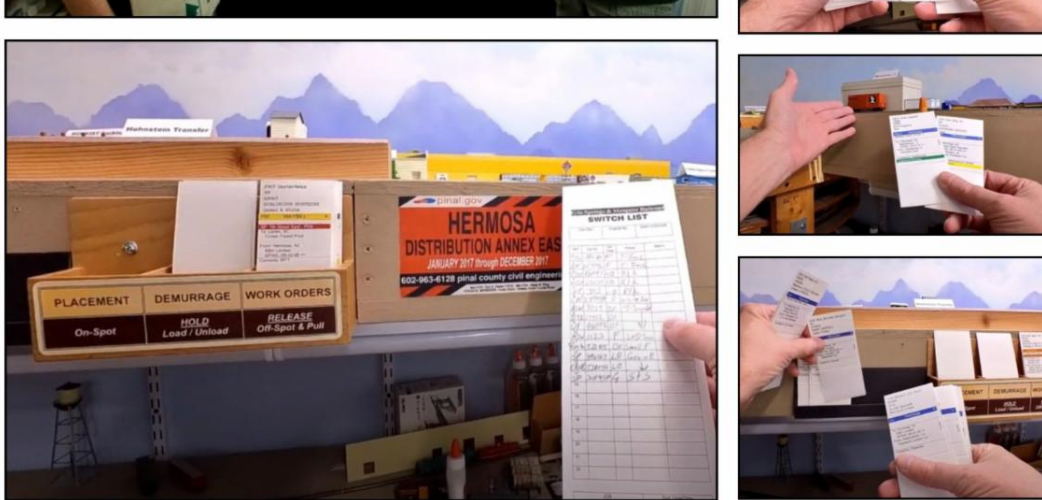
How to Draw a Track Plan

Seaboard Central HO Scale Model Railroad presents: "How to hand draw a track plan for your model railroad." Part 1 deals with basic design principles including materials needed to draw out a track plan.

[Part 2](#) continues the topic of hand drawing a track plan.

Effortless Car Card Management



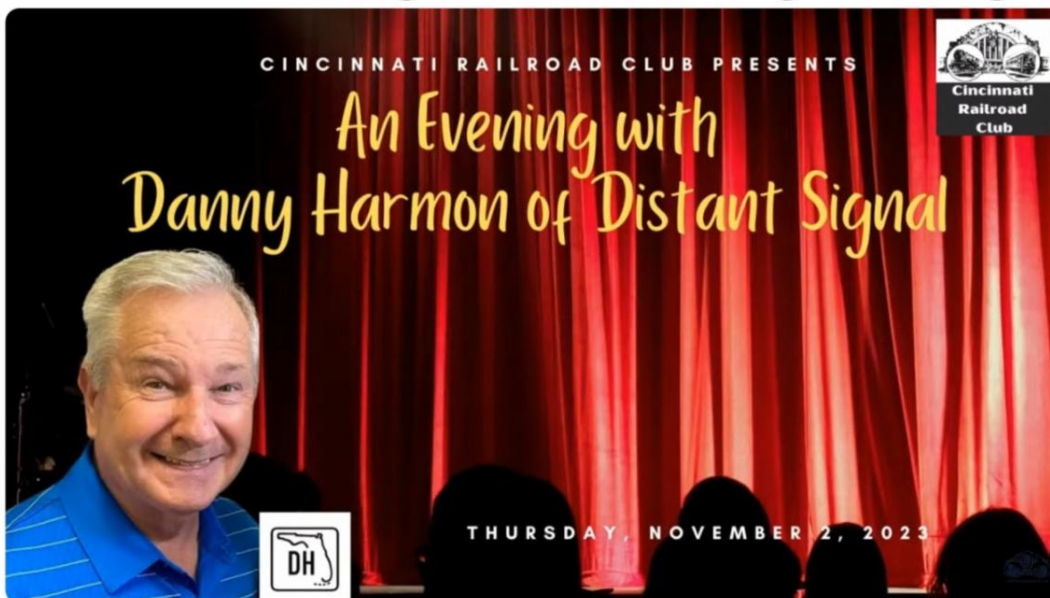


Effortless Car Card Management

Car cards and waybills (CC&WB) is a model railroad car forwarding system used for model train operations. CC&WB is not what most model railroaders would think of as a model train accessory, but it is. The concept is used to expand the operations of model trains on your train layout. Using a railcar forwarding system like car cards and waybills is a key part of model railroad operations.

This video explains the need for, and use of, car card boxes in making the use of car cards easier during a model railroad operation.

Railfanning In The Beginning



Cincinnati Railroad Club Presents: An Evening with Danny Harmon of Distant Signal

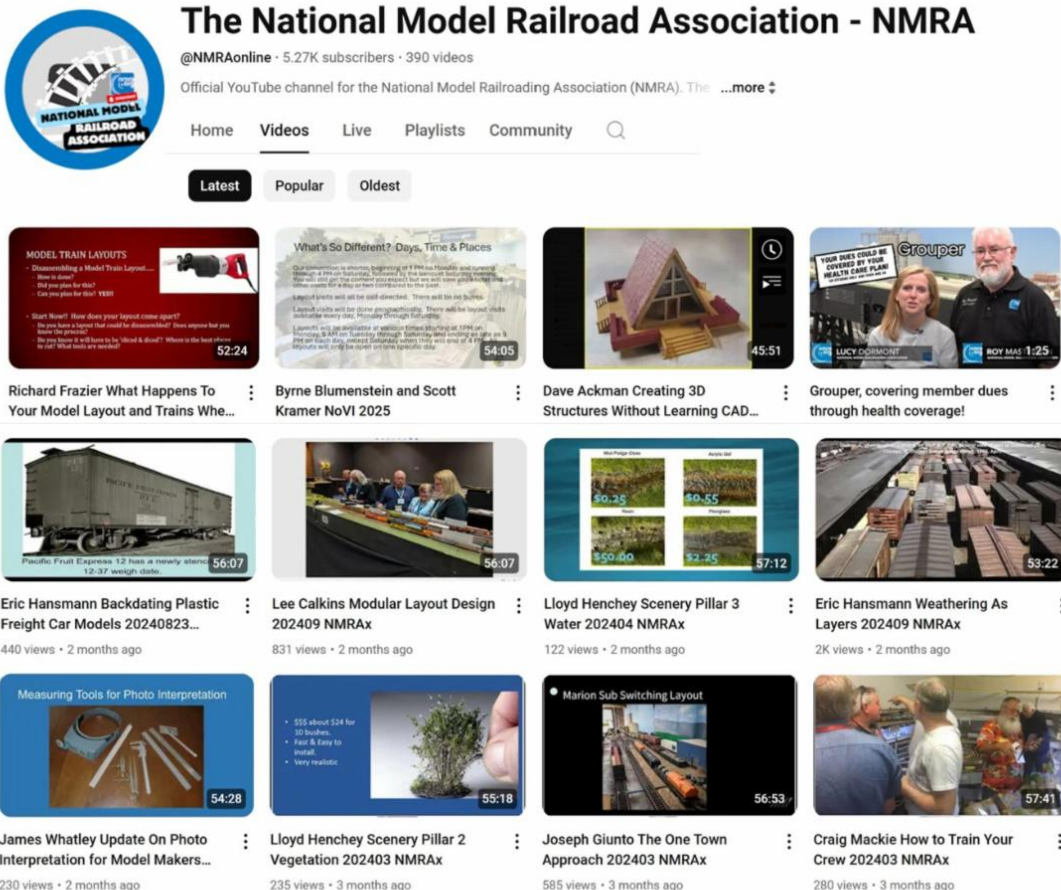


Railfanning In The Beginning

A program by Danny Harmon presented at the Cincinnati Railroad Club meeting on November 2, 2023. Danny talks about railfanning in his early years as a young lad in Florida and shows us the railfanning tools he acquired over the years.

Editor's Note: An by Fox13 TV on January 15, 2025, reads: *"For the past four decades, Tampa Bay area TV viewers have heard the voice of **Danny Harmon**. Now, FOX 13's longtime station announcer is retiring."* (Now he'll have more time to spend doing Distant Signal videos!) PVV

Official YouTube Channel for the NMRA



@NMRAonline

Official YouTube channel for the National Model Railroading Association (NMRA). The channel contains over 390 videos covering a wide range of subjects including how-to projects, railroad history, prototype and model railway operations, and many more subjects. More videos are being added to the collection all the time, mostly through the NMRAX online video presentations that take place every month. Take a look and see what has been added recently!



We look forward to you joining us for the Pacific Coast Region's annual convention March 27-30, 2025.

This year's convention is on the central coast in beautiful San Luis Obispo. If you can't join us in person this year, join our virtual event! We are offering:

- Popular daily schedule – tours and excursions occur in the afternoon
- 3 full days of clinics – Thursday, Friday, and Saturday
- Layout tours, Operating sessions & Excursions
- Modeling With The Masters clinics w/Clark Kooning
- 10+ hours of content/day for virtual event
- In person full fare = Sunday breakfast AND a free full companion fare!
- Great location accessible by Amtrak
- All suites hotel with free breakfast, free cocktail hour and free parking



This year we are also collaborating with [BayRails 10](#), a popular operations event hosted in the Bay Area March 22-24, to make it easier for folks to participate in both events.

Pacific Coast Region Convention

We look forward to you joining us for the Pacific Coast Region's annual convention March 27-30, 2025.

This year's convention is on the central coast in beautiful San Luis Obispo. If you can't join us in person this year, join our virtual event!

This year we are also collaborating with [BayRails10](#), a popular operations event hosted in the Bay Area March 22-24, to make it easier for folks to participate in both events.

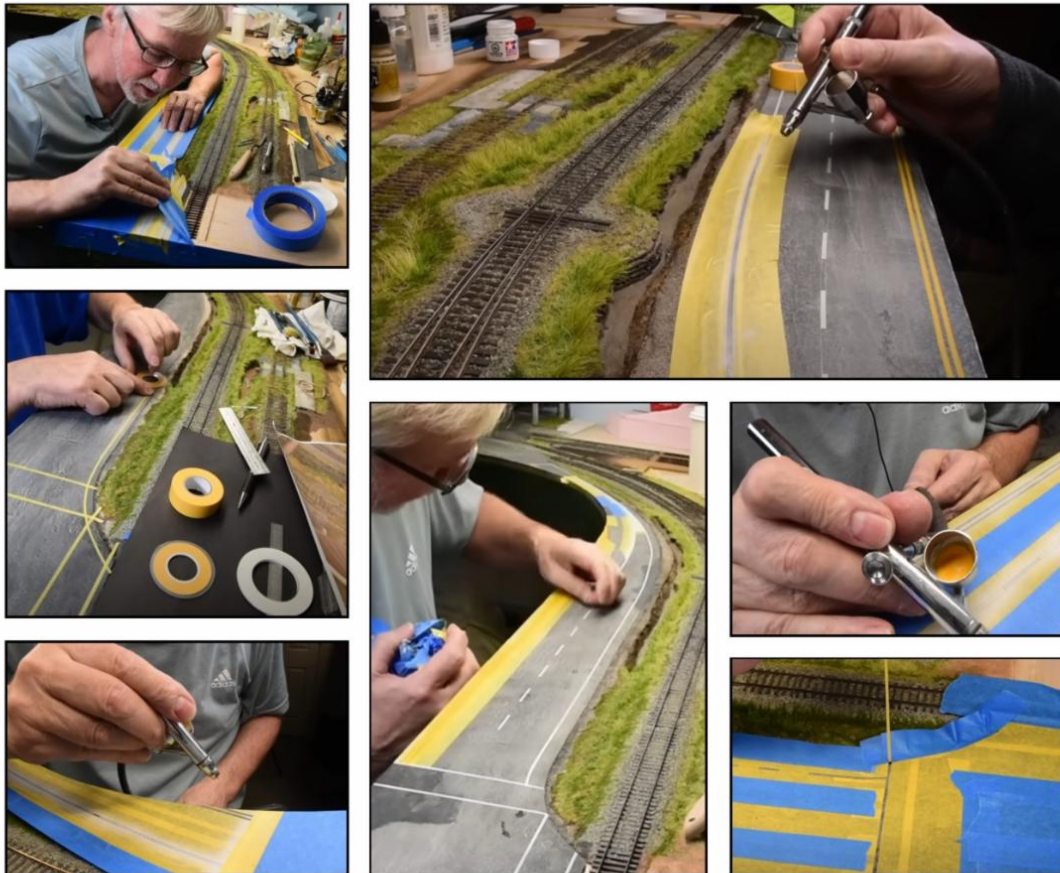
Review: Rapido HO GE 44 Tonner w/ESU LOKSound, DC/DCC, LED Lighting & Capacitor



Review: Rapido GE 44 Tonner

Dive into the world of model trains with this detailed review of the Rapido HO GE 44 Tonner! In this video, James explores the incredible features like ESU LOKSound, DC/DCC compatibility, LED lighting, and the built-in capacitor. Whether you're a model railroading enthusiast or a beginner, this locomotive offers top-tier performance.

Painting Realistic Highway Lines & Graphics for the Model Railroad

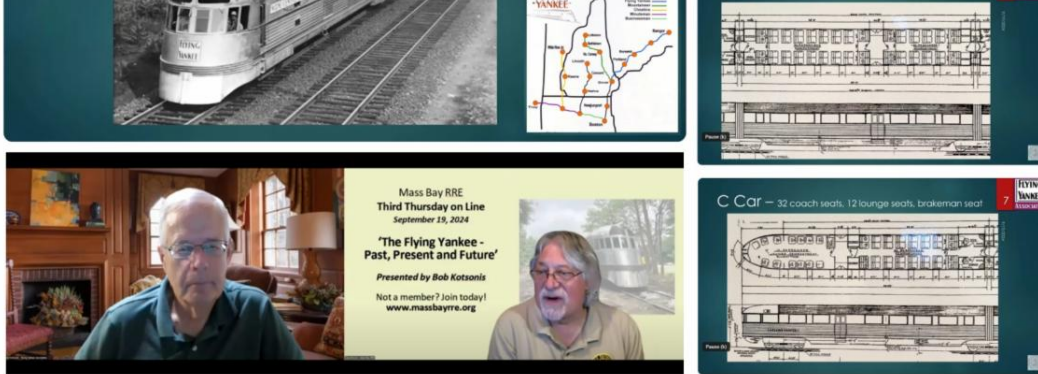


Realistic Highway Lines & Graphics

This is how Boomer paints primary highway road lines and graphics in HO scale. Masking & painting roads will always yield great results if you take the time to apply this method.

'The Flying Yankee - Past, Present and Future'





'The Flying Yankee - Past, Present & Future'

In this video, Bob Kotsonis, Treasurer of the Flying Yankee Association, reviews the modern history of Boston & Maine Railroad Streamliner #6000, more commonly known as the Flying Yankee. He discusses the attempts made by multiple groups to restore and operate it and reviews the current status and condition of the train and its recent acquisition from the State of New Hampshire and move to its new home in Conway, NH.

Building Hell Gate 3 (Custom Radius Turnouts)



Building Hell Gate 3 (Custom Radius Turnouts)

Dennis writes: "Join me on my Journey to complete a 26X30 HOn3 model railroad. My channel, though not designed to be a "how-to" channel, does have lots of "how I" do things. Feel free to go back to earlier content and watch how I got from a metal building to where I am now."

This video is #104 on his continuing, and sometimes overly complicated, journey to complete the layout..., eventually!

Victorian Era HO Scale Layout Tour



[Victorian Era HO Scale Layout Tour](#)

The Victorian iron horse was the most important part of the North American transportation infrastructure system in the late 19th century. In this rendition of western United States railroading, Steve Blodgett has artistically expressed a beautiful representation of late 1800s railroading. (A video by TSG Multimedia)

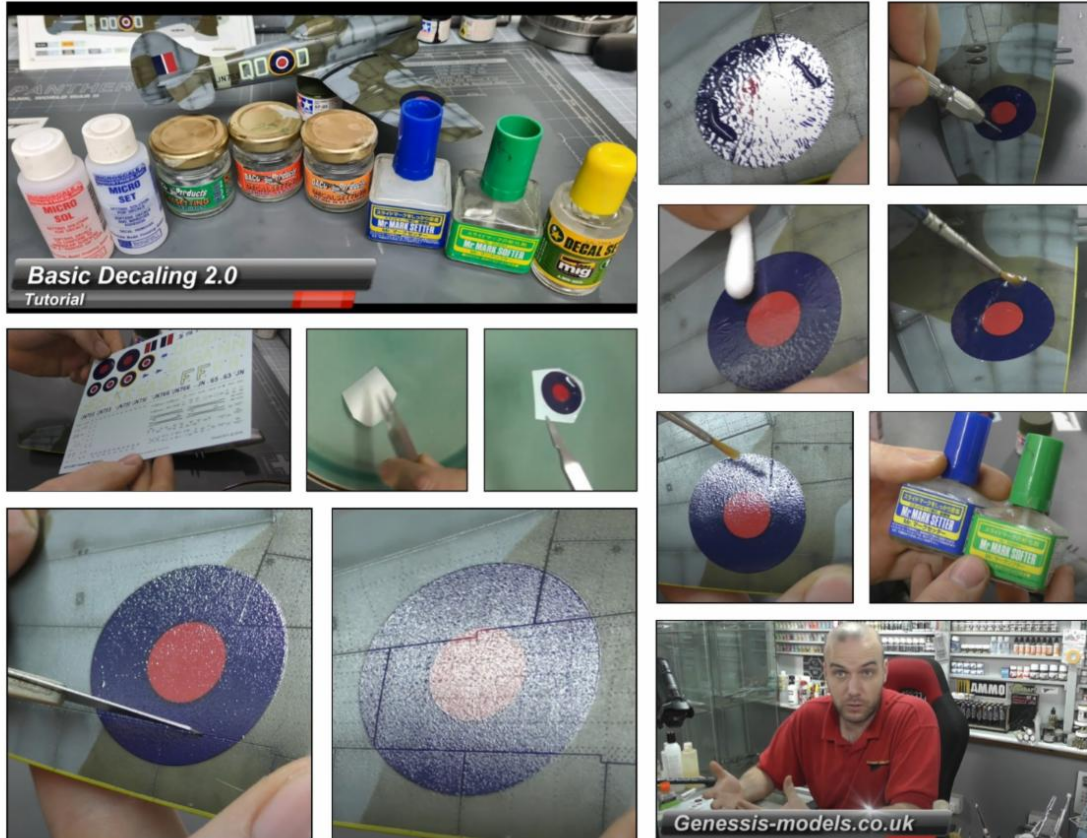
Switching a Michigan Chemical Facility



Switching a Michigan Chemical Facility

HO Switching operation session of a couple southeast lower Michigan facilities on a nicely done shelf layout.

Basic Decaling Tutorial 2.0



Basic Decaling Tutorial 2.0

This video tutorial on basic decaling was presented by Genessis Models.

Genessis Models is for anyone interested in modelling from beginners to advanced modelers, for those with an occasional interest to the over-the-top enthusiast!! *The Genessis Models [website](#) is a great way to socialize and interact with fellow modelers.*

Here you can pick up tips, tricks, and a range of techniques to build your next masterpiece as well as share with others what you have learnt along the way.

Freight Car Anatomy 101

A Guide to Freight Car Construction (Part 1)





Freight Car Anatomy 101

In this video, Timothy discusses prototype freight car construction and types of hardware used on the cars.

Virtual Convention

JOIN THE ON-LINE VIRTUAL CONVENTION!!

The PCR is once again presenting an online virtual version of the convention to those that cannot attend in person. Our goal is to provide as much of the feel of an in person convention as possible with the main focus on connecting with fellow modelers. Just like our in person event, we invite you to come for the modeling but to stay for the friends.

If you are outside the area or are not an NMRA member, the PCR 2025 Virtual Convention will be a great experience with outstanding clinics and other activities. If you are a PCR member that has moved away, it is a great opportunity to reconnect.

While striving to achieve our goal of fully serving our members and others in the hobby by making gathering, education and taking part in experiences at conventions accessible to all, the 2025 PCR Virtual Convention will provide a great on-line experience with

- Clinics
- Contest Room Tour with MMR's
- Special Interest Group gatherings
- Vendor Focus
- Welcome to Ops event
- and more!

PCR Convention



You can attend an online version of the convention for those of you who cannot attend the in-person convention. This form of attendance is available on the PCR Convention website.

N&W HC-46 ACF 2-BAY COVERED HOPPER

Using Accurail's 2200 Series ACF 2-Bay Covered Hopper as the basis, we are offering it in a Norfolk & Western repaint scheme. These cars are N&W class HC-46 and are from an original batch of fifty built by ACF with the Round Herald paint scheme. Subsequently some cars went through a general maintenance program and were



Subsequently some cars went through a general maintenance program and were repainted in the block N&W livery. Photos were found showing at least three of these cars (road numbers 170753, 170768 and 170794) were reweighed at some later date because that area is "patched out" on the car with the new data displayed. Those same photos place these three cars as being in service in 1992 and 2004. It is these three, highly unique, road numbers that Cincinnati Division 7 is now offering for sale as limited edition kits.

A special Thank You! goes out to the N&W Historical Society for their assistance in providing research support in the development of this limited-edition freight car. Their investment of time and the supply of photos and information made this car possible.

Pricing is \$25 per car, or a 3-car set at \$70. Shipping (via USPS Priority) is \$10.40 for one car and \$18.40 for two or more cars. Ohio residents, please add 7.8% sales tax on the total price of the kits and the shipping/handling fee. Customers outside the USA, please [contact us](#) for shipping arrangements and charges.



To order, please send **your email and phone** information along with a **check or money order** in US dollars, payable to Cincinnati Division 7, MCR, NMRA, to:

Cincinnati Division 7 Car Projects
c/o Paul Maciulewicz
9151 Congress Court
West Chester, Ohio 45069

[N&W HC-46 ACF 2-Bay Covered Hopper](#)

Fund-Raising Page on the NMRA Website

your portal to more fun in scale model railroading

Home In The News Membership Education Standards Regions Conventions Fundraising Calendar Contact

Division and Region Fund-Raising Projects

We provide links to fund raising projects for Divisions and Regions to help with their cause.

Mid Central Region

- Division 6's [Buckeye Steel Casting Gondola Car](#) (link expire 2025/08/01)
- Division 7's [HO Scale Car Projects](#) (link expire 2025/07/01)

Rocky Mountain Region

- Northern Utah Division [Cars](#) (link expire 2025/07/01)

(Each entry has an expiration date on the link, so we avoid bad links from accumulating here. Please contact the Webmaster or IT Manager (contact us shown in the footer) to add, alter, remove or renew the link for the project. We will keep the project listed, so any member can use a search engine to find it.)

[Division & Region Fund-Raising Projects Page](#)

This is the direct link to the Division & Region Fund-Raising Page. The Fund-raising page itself covering national projects is available [here](#). On it you will find a link to the NMRA Calendar which, in addition to explaining how to order one, **also explains how to submit photos for use in the 2025 Calendar!**

STATION No. VI

2025 NMRA

Novi, MI

CELEBRATING 90 YEARS

national model railroad association

NOVA REGION

BIRTHPLACE

NOVI SPECIAL

Station No. VI

2025 NMRA National Convention
of the National Model Railroad Association
July 14th- July 19th, 2025

90th National Model Railroad Convention

For more information on this convention, or to register for the convention, go to the Station No. VI's website at: <https://nmra2025.com>

NMRA's Partnership Program



PARTNERSHIP PROGRAM

NMRA members can log in and click on the **Benefits** tab to view the **NMRA Partnership Program**. Please patronize all of our partners for some fantastic discounts as an NMRA member!

Bespoke Rail
CatzPaw Innovations
CB Train Junction
Clever Models, LLC
Coastmans Scenic Products
Composite Designs, Inc.
CMR Products, LLC
Conowingo Models
Cowcatcher Magazine
Daylight Sales (Merchandise)
Deepwoods Software
Deluxe Materials
Diorama Hobbies
Dwarvin Enterprises, Ltd
East Coast Circuits
Enterprise and National Car
Rental Services
Evan Designs
Feight Studios
Fusion Scale Graphics
Gatorfoam
Great Decals!
Green Frog Productions
Highways and Byways Model
Railroad Graphics
Hot Wire Foam Factory
Ipswich Hobbies

ITLA Scale Models
K.I.S.S Method, Inc.
LaBelle Woodworking Co.
LARC Products
Logic Rail Technologies
MAC Rail
**Mainline Model Railroad
Products, LLC* (Hobby Shop)**
Micro-Mark
Mine Mount Models
Miniprints
MrTrain.com
Model Railroad Benchwork
Model Railway Backshop
MRC (Model Rectifier Corp)
Model Train Catalogue
Modelers Decals & Paint
Motrak Models
Mudd Creek Models
New Creations Victorian
Railroad Buildings
Nick and Nora Designs
Northlandz
NScale Works by Mike Holly
Old Depot Gallery
Old West Scenery
RAM Track

RR-CirKits
R & J Details
Scale Model Plans
Scale Railroad Models
Scenery Solutions
Showcase Miniatures
T-Trak by Denniston
Team Track Models
The N Scale Architect
The Old Depot Gallery
Tichy Train Group
Touch of the Brush Model
Weathering
Train Installations, LLC
The Train Place* (Hobby Shop)
Train Show, Inc.
Trainmasters TV/Model
Railroad Hobbyist Store
TRAINZ.com
TSG Multimedia
UGEARS
USA Airbrush Supply/
Badger Airbrush
White Rose Hobbies, LLC
WiFi Model Railroad, LLC
Yelton Models

[New Partners in RED*]

Dec 2024

Partnership Program

NMRA@HOME



The Baltimore Streetcar Museum

Featured in the Division Business Car Column appearing in the December 2024 issue of NMRA Magazine.

Division 11 of the Mid-Eastern Region shared their outing to the Baltimore Trolley Museum in the *Susquehanna Sidetracks*, the newsletter of the division. Members had the opportunity to ride vintage trolleys dating from the 1920s to the 1950s.

Fixtures for electronics projects

Featured in the Division Business Car Column appearing in the December 2024 issue of NMRA Magazine.



Peter Leach MMR® is not a fan of electronics. But that didn't stop Peter from creating fixtures for testing, installing, and programming DCC decoders along with other electronics projects. He shared them in *The Derail*, the newsletter of the 100% NMRA Member San Jacinto Model Railroad Club.



Adding weight to closed up cars

Featured in the *Division Business Car Column* appearing in the December 2024 issue of NMRA Magazine.

What do you do when a car that you have needs more weight added to it, but the car is glued shut? Tony Pawlicki of the Rocky Mountain Region's Pikes Peak Division shares some of the techniques he uses on covered hoppers in the division's newsletter, *The Milepost*.

How to present a clinic

Featured in the *Division Business Car Column* appearing in the December 2024 issue of NMRA Magazine.

The newsletter of the Mid-Eastern Region's Potomac Division, *The Potomac Flyer*, contained an article providing great tips on how to present a clinic from a few of its members. Take a look at their tips and turn your clinics into great clinics!



John Schuhle's HO scale Pennsy

Featured in the *Division Business Car Column* appearing in the December 2024 issue of NMRA Magazine.

John's 45 by 47 foot HO scale layout of the Pennsy between Harrisburg and Altoona Pennsylvania appeared in the *Crossties*, the newsletter of the Mid-Eastern Region's James River Division. His layout, with a 350 foot double track mainline, is this month's layout tour.



The ***Division Business Car*** column appears in even-numbered months in NMRA Magazine. It's loaded with great modeling ideas, plus useful information that can help make your Division, Region, or 100% NMRA Club even better. The information comes from articles published in Region, Division, and Club newsletters. The best of these articles are posted on the NMRA website. You can read the entire archive, from as far back as 2011 right up to the latest posting, by clicking [here](#).

Previous issues of the ***NMRA Turntable*** are available on the Turntable Archives page. You must first log in as a member at: nmra.org After you are in the members-only section, then you must hover over 'Publications' on the menu bar, then 'NMRA Turntable', and then click on one of the list of back issues.

Editor: [Paul Voelker, HLM](#)

Executive Editor: [Rick Coble](#)

The NMRA Turntable is an official monthly production of the National Model Railroad Association, Inc. Publishing Department (Riley Triggs Manager). Its purpose is to introduce NMRA members to a selection of instructional videos and online publications that they may find of interest. If you know of an NMRA member who is not receiving this mailing, please direct them to [here](#) to update their email address. If you no longer wish to receive these mailings, please don't mark them as SPAM. Instead, click the Safe Unsubscribe link at the bottom of this page. ©2021 National Model Railroad Association, Inc., P.O. Box 1328, Soddy Daisy TN 37384.

